

AWLCRAFT[®] SE

METALLIC COLOR CARD

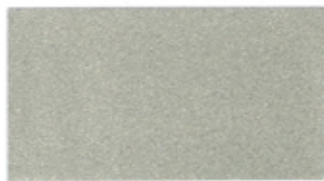
PREMIUM YACHT FINISHES

AWLGRIP.COM



AWLCRAFT® SE METALLIC COLORS

RED OE CODE NUMBERS = AWLCRAFT SE METALLIC FINISHES
BLUE S8 CODE NUMBER = AWLCRAFT SE HYBRID METALLIC FINISHES



Moonglow Silver Metallic
OE1005 / S81005



Yamaha Outboard Gray Metallic
OE1114



Red Raspberry Metallic
OE7002



Tropical Green Metallic
OE4002



Sandalwood Metallic
OE1001 / S81001



Twilight Gray Metallic
OE1004 / S81004



Redfire Metallic
OE7001



Medina Green Metallic
OE4006



Crystal Silver Metallic
OE1009 / S81009



Black Mist Metallic
OE2003



Brandywine Metallic
OE7004



Emerald Green Metallic
OE4005



Bright Aluminum Metallic
OE1031



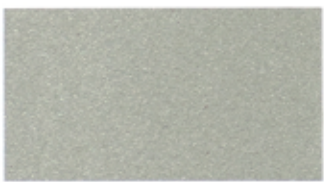
Panther Black Metallic
OE2002



Merlot Red Metallic
OE7003



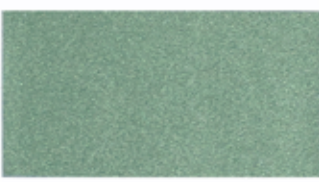
Cypress Green Metallic
OE4004



Platinum Metallic
OE1077



Cayenne Red Metallic
OE7006



Whisper Green Metallic
OE4009



Deep Woods Green Metallic
OE4001



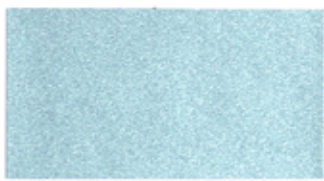
Stone Gray Metallic
OE1006 / S81006



Salsa Red Metallic
OE7005



Tasmanian Green Metallic
OE4007



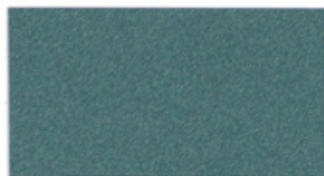
Speedblue Metallic
OE5017

Color chips may vary slightly from manufacturing standards. Custom color matching available. Please check pricing and availability of your chosen color with your local supplier.

Due to the variances in computer monitor color settings, these swatches may not exactly match the actual colors.

RED OE CODE NUMBERS = AWLCRAFT SE METALLIC FINISHES
BLUE S8 CODE NUMBER = AWLCRAFT SE HYBRID METALLIC FINISHES

AWLGRIP®



Glacier Blue Metallic
OE5024



Mid Atlantic Blue Metallic
OE5009



Blue Steel Metallic
OE5013 / S85013



Pale Gold Metallic
OE9013



Tourmarine Blue Metallic
OE5006



Electric Blue Metallic
OE5142



Dolphine Blue Metallic
OE5052 / S85052



Chameleon Gold Metallic
OE9003



Horizon Blue Metallic
OE5019



Palma Blue Metallic
OE5071



Imperial Blue Metallic
OE5012



Aurora Gold Metallic
OE9005 / S89005



Aquamarine Metallic
OE5007



Enchanted Blue Metallic
OE5010



Mulberry Metallic
OE5002



Brown Sugar Metallic
OE6001 / S86001



Caribbean Blue Metallic
OE5005



Wisteria Blue Metallic
OE5018



Purple Passion Metallic
OE5003



Valentina Brown Extra
 Sparkle Metallic
OE6107



Bright Atlantic Blue Metallic
OE5011



Robin Blue Metallic
OE5016



Cordovan Gold Metallic
OE9014



Brazil Brown Metallic
OE6003

Color chips may vary slightly from manufacturing standards. Custom color matching available.
 Please check pricing and availability of your chosen color with your local supplier.

See important details and technical tips on the back cover.

*Due to the variances in computer monitor color settings,
 these swatches may not exactly match the actual colors.*

Awlcraft SE Color Card Important Details:

- The color card provides an indication of final color; the final shade will be determined by application technique, equipment choice, and painting environment.
- The color card is only a selection of the more popular colors that are available. Additional colors are available on [Mixitcloud.com](https://mixitcloud.com) or reach out to your Awlgrip Representative if a custom color is desired.
- Color matching to OEM (Original Equipment Manufacturer) is possible. Please ensure you have a specific color, brand, paint code and a paint sample (if available) when submitting a color matching request.
- Certain colors may be offered in a hybrid metallic finish (utilizing the product code prefix of S8) to suit certain application areas, environment, or applicator experience. This hybrid metallic finish option may be more suitable for larger or complex areas or for use on sensitive navigation equipment such as radar domes. Please contact your Awlgrip Representative for color alternatives.
- All Awlcraft SE basecoats must be overcoated with either Awlgrip HDT Clearcoat (OC0300) or Awlcraft 3000 Clearcoat (TF0300). If a semi-gloss, satin, or flat / matte finish is desired, Awlcraft CS, Customizable Sheen (OJ0300 / OJ0301) may be applied over Awlcraft SE basecoat.

Awlcraft SE Technical Tips:

- Patchy or cloudy variation over flat surfaces may be a result of not achieving full opacity. This can be improved by applying additional basecoats before applying the clearcoat. Every color formulation will have different opacity strength, especially those containing high levels of metallic or pearlescent effect pigments. Please contact your Awlgrip Representative for advice.
- Prior to the application it is advised to apply the desired paint to a large panel to assess suitability.